

BLOOMFIELD BUSINESS PARK 411 BLOOMFIELD DRIVE WEST BERLIN, NJ 08091

INDUSTRIAL
INVESTMENTS



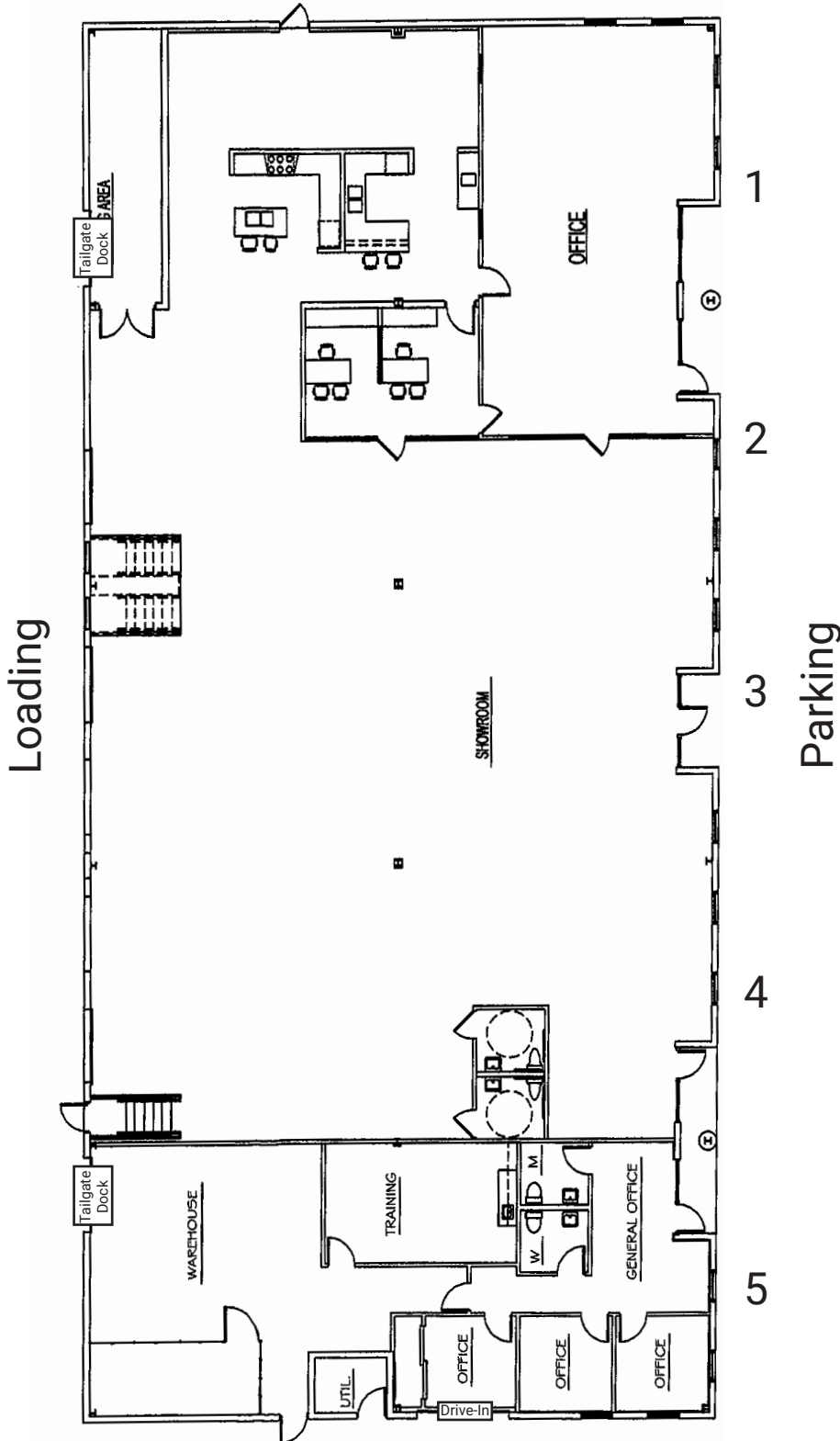
- 10,500 SF Building
- Two Tailgate Docks (expandable to five) and One Drive-In Door
- Excellent Location on Route 73
- Minutes from NJ Turnpike, I-295, Route 30, Route 38, Route 70, and Philadelphia



FOR MORE INFORMATION: | 215.542.8017 | INDUSTRIALINVESTMENTS.COM

BLOOMFIELD BUSINESS PARK 411 BLOOMFIELD DRIVE WEST BERLIN, NJ 08091

INDUSTRIAL
INVESTMENTS



FEATURES

- Units from 2,100 Sq. Ft.
- Tailgate and Drive-In Loading
- 15' Clear Ceilings
- 3-Phase Power
- Offices-to-Suit
- Public Water and Sewer
- Natural Gas Heating
- Separately Metered
- Flexible C-2 Commercial Zoning
- Master-Planned Business Park

LOADING DETAILS

- Drive-In Door: 10' W x 12' H
- Tailgate Docks: 8' W x 10' H

BROKERS PROTECTED

The information herein is from sources deemed reliable,
but is not guaranteed. All measurements are approximate.

215.542.8017
INDUSTRIALINVESTMENTS.COM